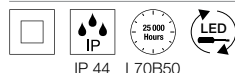
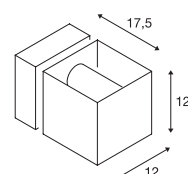
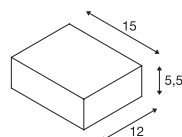
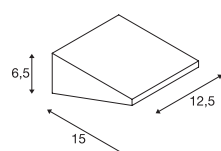
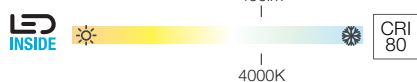
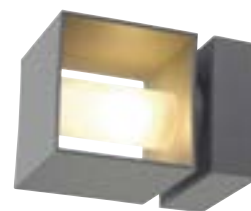


IPERI
WLQUADRASYL
WL, TCR-TSESQUARE TURN
WL, G9

220-240V ~50/60Hz
Systemleistung: 4,5W
Material: Aluminium / Kunststoff

- Schutzart IP44 nur bei Montage mit Lichtaustritt nach unten.



220-240V ~50/60Hz
Material: Aluminium / Glas



220-240V ~50/60Hz
Material: Aluminium / Glas



231315	400lm 4000K	



GX53 <11W
Ø: 7,5 cm L: 2,7 cm



LED GX53 | 6W | 120°
4000K | 550lm | EEK=F
6kWh/1000h

Art. Nr. 1005269



G9 <42W
Ø: 3,5 cm L: 8 cm



LED G9 | 3.7W | 300°
3000K | 430lm | EEK=E
4kWh/1000h

Art. Nr. 1005286



Variante	Art. Nr.
400lm 4000K CRI80 ■ anthrazit	231315

Variante	Art. Nr.
1xGX53 ■ anthrazit	232285

Variante	Art. Nr.
1xG9 ■ grau	1000335